

## **\*\*Adventure Vehicles NW\*\***

### **U-Weld Engine Mounts**

Thanks for purchasing U-Weld Engine Mounts from Adventure Vehicles NW! We appreciate your business and want to provide you the clearest possible instruction on how to successfully weld your purchase.

To help you get these mounts welded up and ready to install, see below for detailed instructions. You can also check out our Youtube video to see a demonstration of the process at: (insert link here).

**STEP 1:** Verify you've got all your pieces. Here they are:



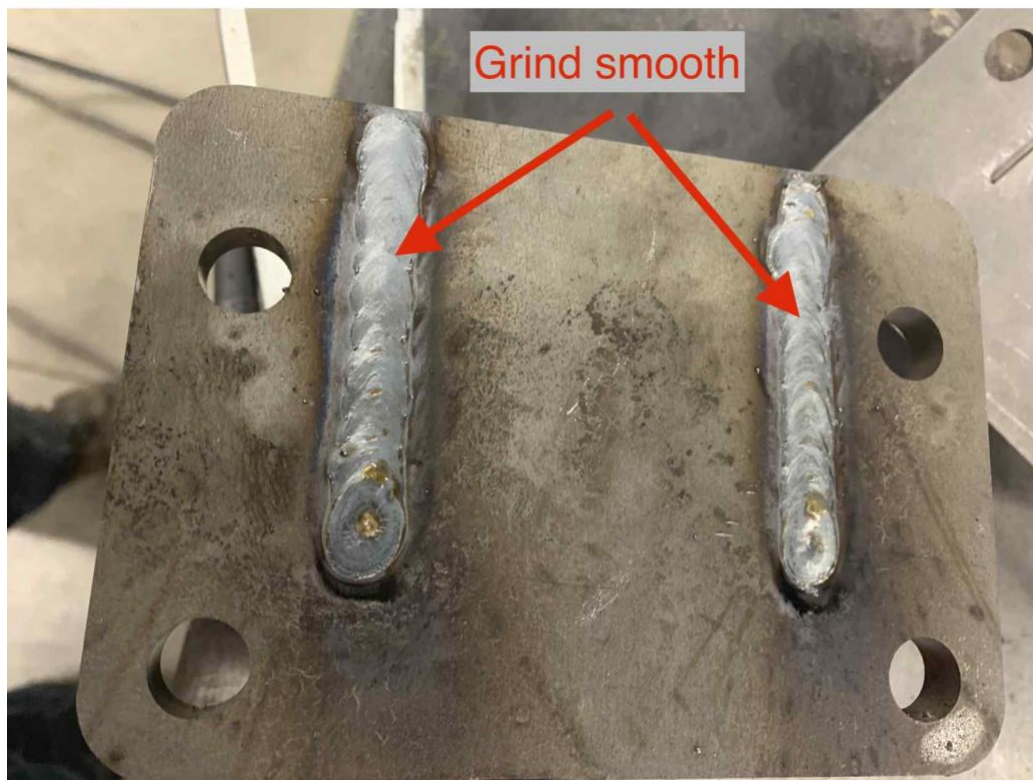
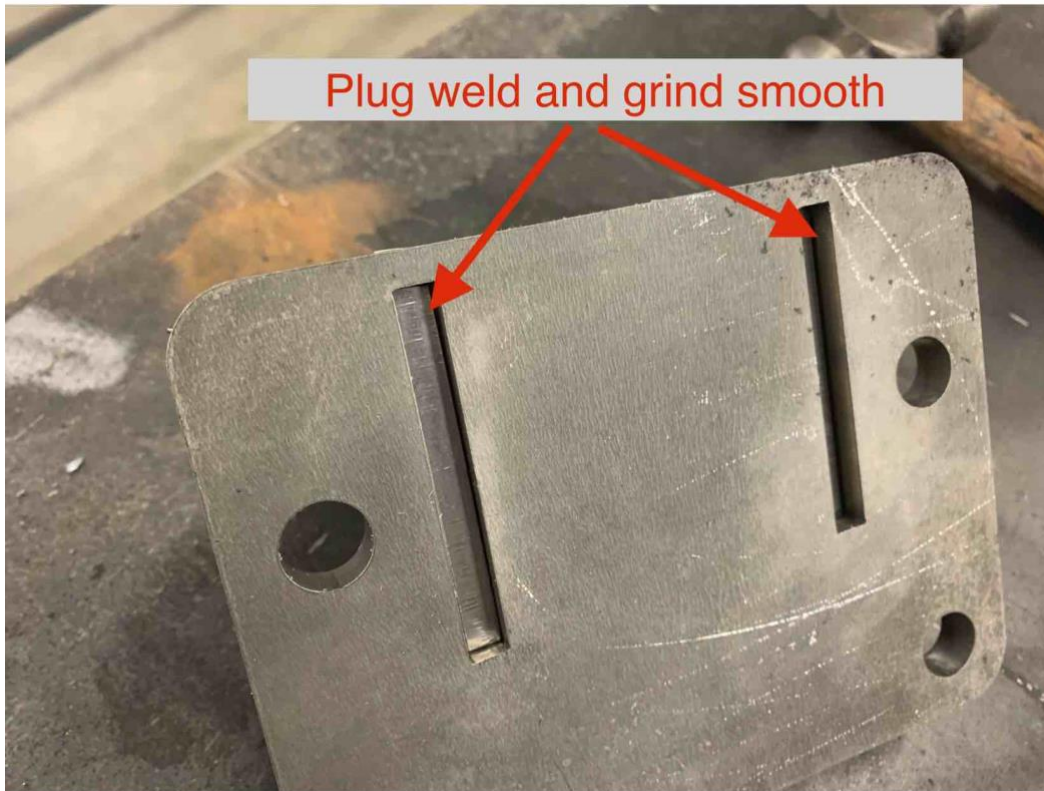
**STEP 2:** Match up your *right* mount with your *right* plate, and your *left* mount with your *left* plate. You can determine which side is which by looking for the lightly engraved “R” or “L” on each piece.



**STEP 3:** Slot the right mount into the right plate. You'll need to lightly hammer the mount into the slots in the plate so that it's nice and fitted. It should look like this:



**STEP 4:** Plug weld the bottom of the plate and grind smooth.



**STEP 5:** Fillet weld both sides of the mount.



And there you have it! We love to see our customers' projects, either under construction or totally completed. You can share your progress on Instagram at <https://www.instagram.com/adventurevehiclesnw/>.

Thank you for your business!